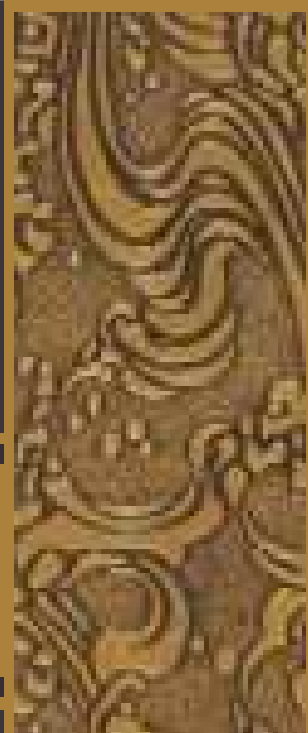
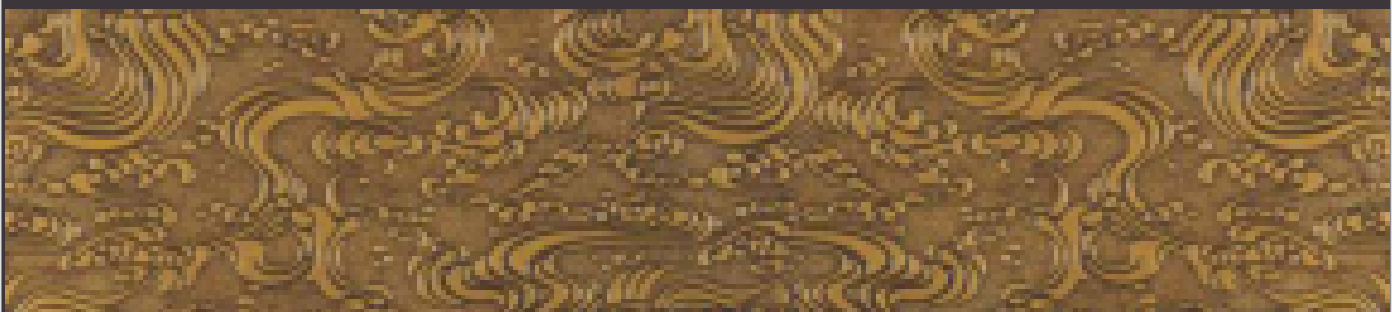
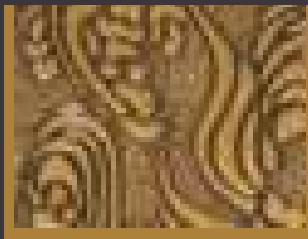




*natural*  
**Effectz**



## HDF BASED EMBOSSED DECORATIVE PANELS



Shade No.: 403



UNPOLISHED

EGYPTA

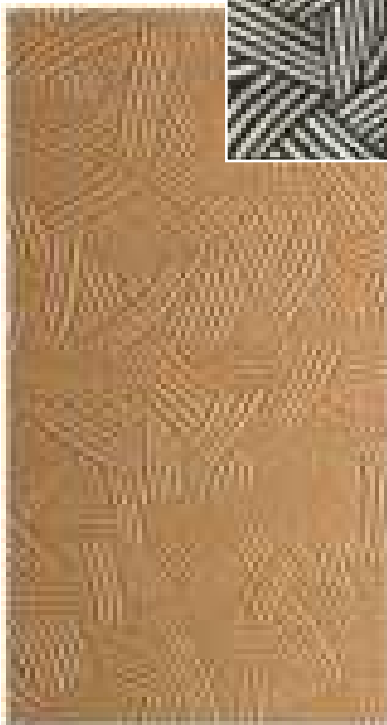
Shade No.: 407



UNPOLISHED

NATURA

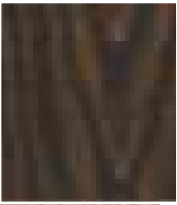
Shade No.: 410



UNPOLISHED

WEB

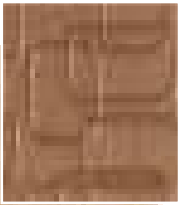
Shade No.: 411



UNPOLISHED

CROWN TEAK

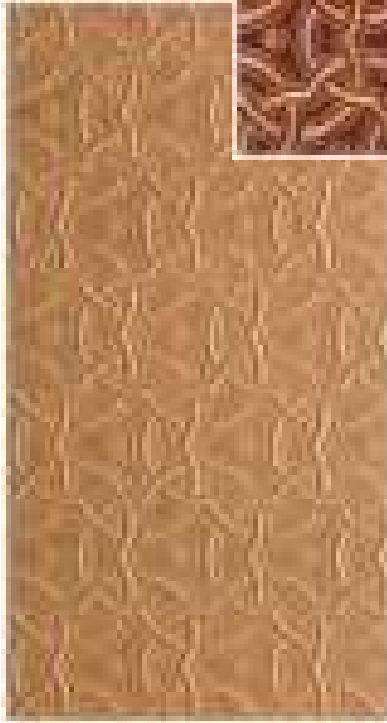
Shade No.: 412



UNPOLISHED

CUBOID

Shade No.: 413



UNPOLISHED

FLORINA

shade No.: 414



UNPOLISHED

PLUME

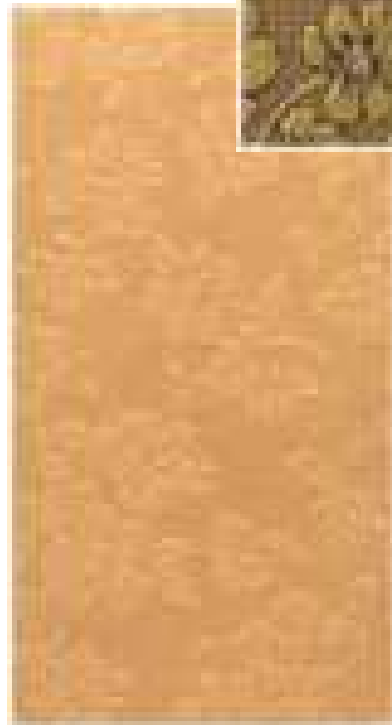
Shade No.: 415



UNPOLISHED

VEINS

Shade No.: 418



UNPOLISHED

FLORA

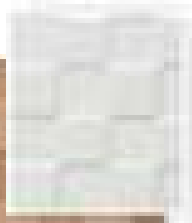
Shade No.: 422



UNPOLISHED

FERN

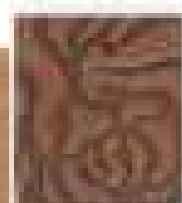
Shade No.: 425



UNPOLISHED

CHESS

Shade No.: 426



UNPOLISHED

PETAL

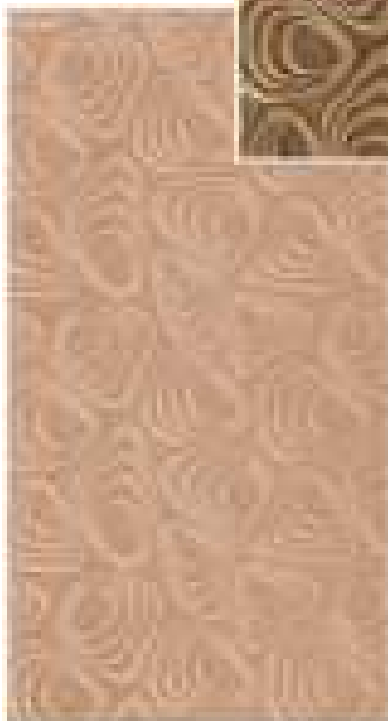
Shade No.: 427



AMOEBEBA

UNPOLISHED

Shade No.: 429



BUTTERFLY

UNPOLISHED

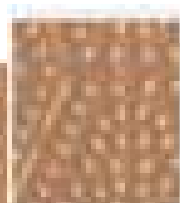
Shade No.: 430



FABRIC

UNPOLISHED

Shade No.: 431



DOTS

UNPOLISHED

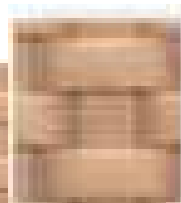
Shade No.: 434



LEAF

UNPOLISHED

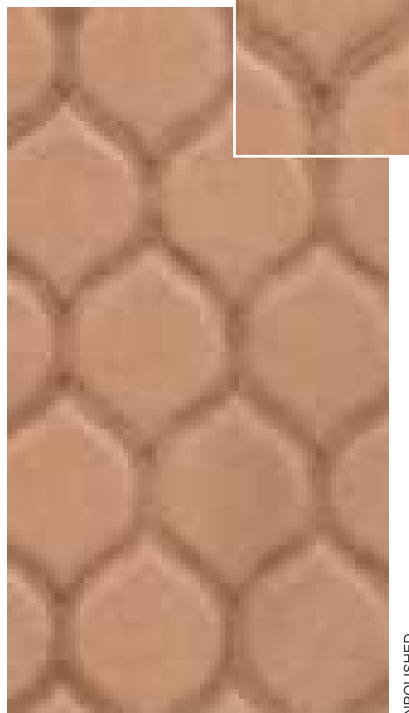
Shade No.: 435



MATS

UNPOLISHED

Shade No.: 436



UNPOLISHED

HONEYCOMB

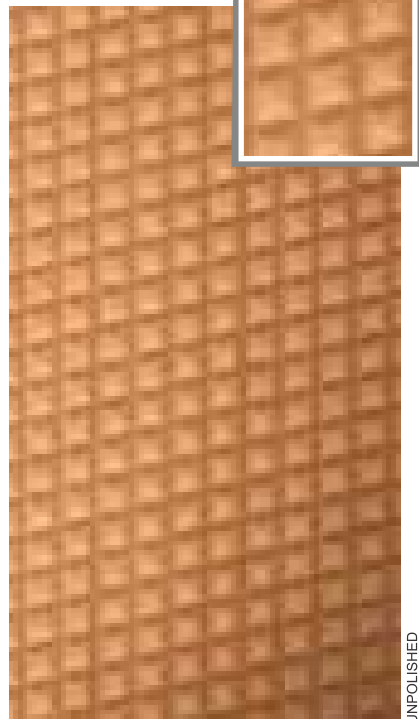
Shade No.: 438



UNPOLISHED

SANDMARKS

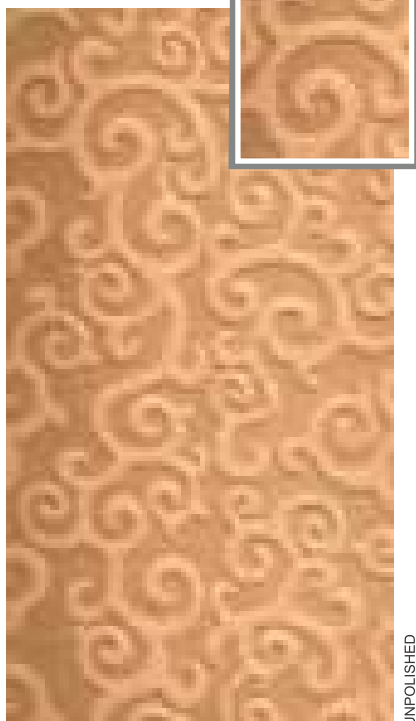
Shade No.: 439



UNPOLISHED

KNURL

Shade No.: 440



UNPOLISHED

SPIRALS

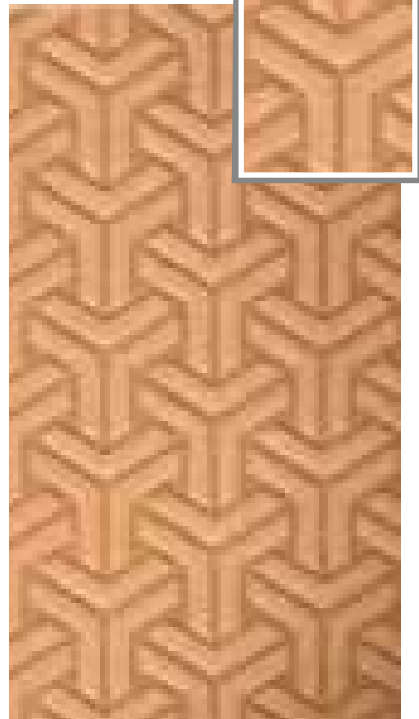
Shade No.: 441



UNPOLISHED

SWIRL

Shade No.: 442



TREAD MARK

Shade No.: 443



FLORAL

Shade No.: 446



VINE

Shade No.: 447



BLADE

Shade No.: 449



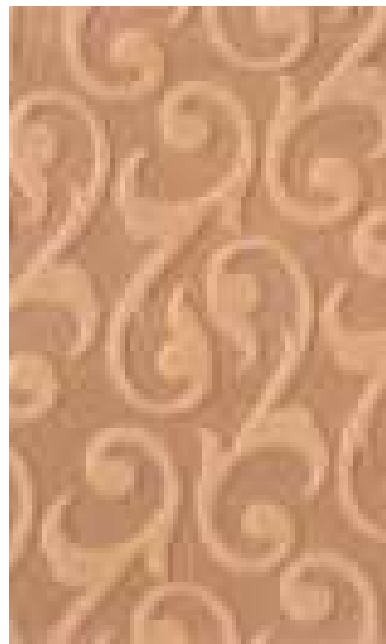
JASMINE

Shade No.: 450



STENCIL

Shade No.: 451



CURLED

Shade No.: 452



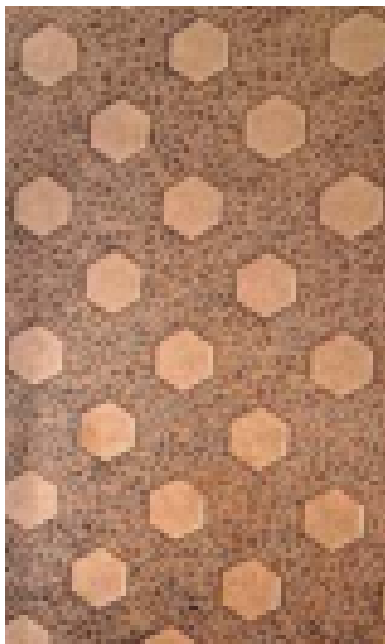
OLIVE

Shade No.: 453



GEOMETRIC

Shade No.: 454

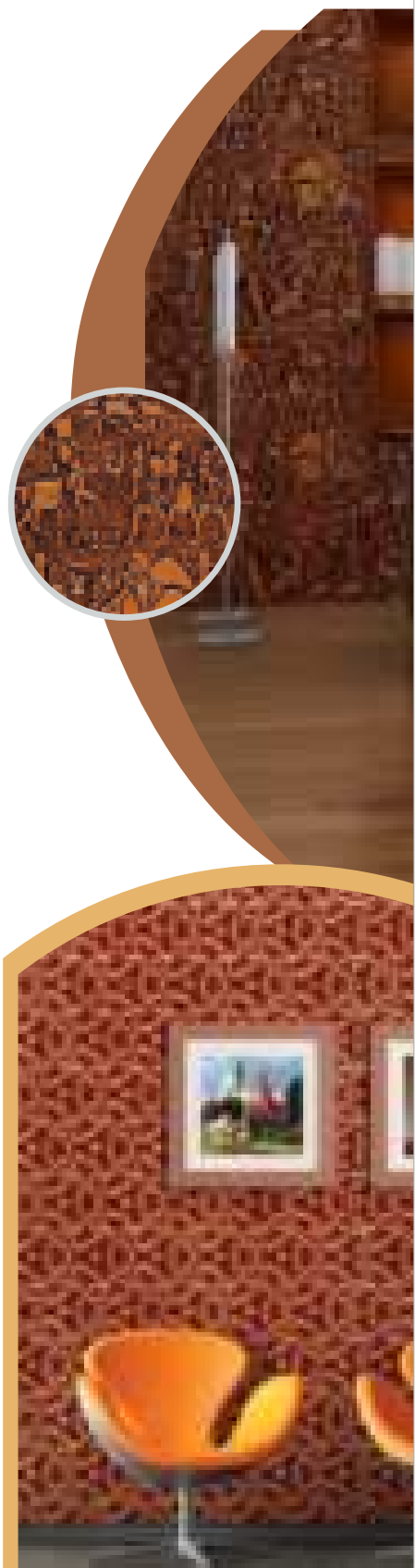


HEXA

Shade No.: 455



TURNIP



## TECHNICAL SPECIFICATIONS

Thickness	2.3mm
Core material	HDF
Panel Size	8ft (2440mm) x 4ft (1220mm)
Designs	More than 32 Designs in Raw Finish
Available in	Raw Unpolished
Polish Type	Dual Tone with Antique Effect / DUCO Finish / PU Finish can be given.
Fixing	Similar to the way veneer is fixed.
Applications	Wall/Ceiling Cladding, Shutter Cladding & Furniture Embellishments

## WHY ACTION TESA EMBOSSED PANELS

- Action Tesa Embossed on HDF sheet at its semi cure stage while other embossed designs are available on MDF sheet.
- Action Tesa has more depth in Embossed HDF sheets and the depth is normally higher than 0.6mm whereas the others are just 0.2, 0.3mm. This results in a much more beautiful panel on Tesa HDF.
- Action Tesa uses European technology to make the Embossed Panels and all the Embossed Molds are imported from Europe with better Chrome Plating to give a smoother and glossy finish on the surface and the sharpness in edges of Embossing is more in compare with Local panels available.
- The density of the Tesa product is more than 850kg/m<sup>3</sup> to ensure that consumption of paint is to be minimize while the other Embossed Panels consumes more paint. The back side of our Embossed is having rough surface so that bonding is better when glue applied and fixed on any substrate.
- All raw material being manufactured by Action Tesa itself while other manufacturers buy the MDF sheets from different channel, which resulting variation in quality. Action Tesa used consistent quality of raw material to make it's Embossed Sheet.
- Action tesa HDF Embossed Panels are ideally suitable for polishing, painting, PVC film pressing, membrane pressing etc.
- Action Tesa is using DOME technology so the moisture content is distributed equally in panels while other panels having high moisture content & moisture is not equally distributed, resulting more complaint. Action Tesa HDF Board which is being specially manufactured in-house with lot of wax so that the paint consumption is much less as compared to any other panel available.
- The molecular structure & IB in Tesa Panels is better than other Embossed Panels because Tesa is Embossing in semi cure (After the Mat formation) while other panels give the Pressure on surface after the MDF get completely cure thus creating destruction in molecular structure.
- Action Tesa has the widest range of more than 32 Designs.



www.actiontesa.com

**Balaji Action Buildwell Pvt. Ltd.**

Regd. Office : G-11, Udhog Nagar, Peeragarhi, New Rohtak Road,  
North West Delhi, Delhi - 110 041 Ph.: 011-41120000, 41120020

**CUSTOMER CARE SERVICE: 1800 309 07 07**

customerservices@actiontesa.com



**TESA PRODUCT RANGE :** • Pre-Laminated & Plain Particle Board • Pre-Laminated & Plain MDF & HDHMR Board • BOILO - BWP FR HDF Board • Abraze - Highly Scratch Resistant Prelaminated MDF Board • Ornamatte - Matte Finishes Board • HDHMR Door • HDF Laminated Flooring • Embossed HDF Board • High Gloss UV Coated Board • High Gloss Acrylic Board • Door Skins